

New!

Model RTX 2586

Talon 1/2 ATR Extreme Rugged 200 MS/s RF/IF Signal Recorder



Pentek Talon RTX SFF



General Information

Pentek’s Talon RTX Small Form Factor (SFF) recorders provide the performance of large rackmount recorders in the smallest footprint available in Pentek’s Talon Recording System product line. Packaged in an extremely rugged 1/2 ATR form factor, these recorders provide high-performance processing, high speed data storage and large solid state storage capacity.

Optimized for SWaP (size, weight and power,) Talon RTX SFF recorders are packaged in a 1/2 ATR footprint, measuring 7.688" H x 4.880" W x 14.125" D and weighing only 22 pounds (10 kg). These recorders are capable of sustained real-time recording speeds up to 4 GB/s and can hold up to 30 TB of SSD storage.

Power consumption has been greatly reduced in this package. A standard system will draw approximately 110 W at full operation.

The Model RTX 2586 provides up to four phase-coherent channels of 200 MHz 16-bit A/Ds, allowing users the ability to capture up to 80 MHz of RF/IF signal bandwidth per channel with excellent dynamic range. It can sample RF/IF signals up to 700 MHz and provides digital downconverters with selectable decimation to 32k.

The RTX 2586 provides optional playback via 800 MHz 16-bit D/As with matching digital upconversion and interpolation.

Extremely Rugged Design

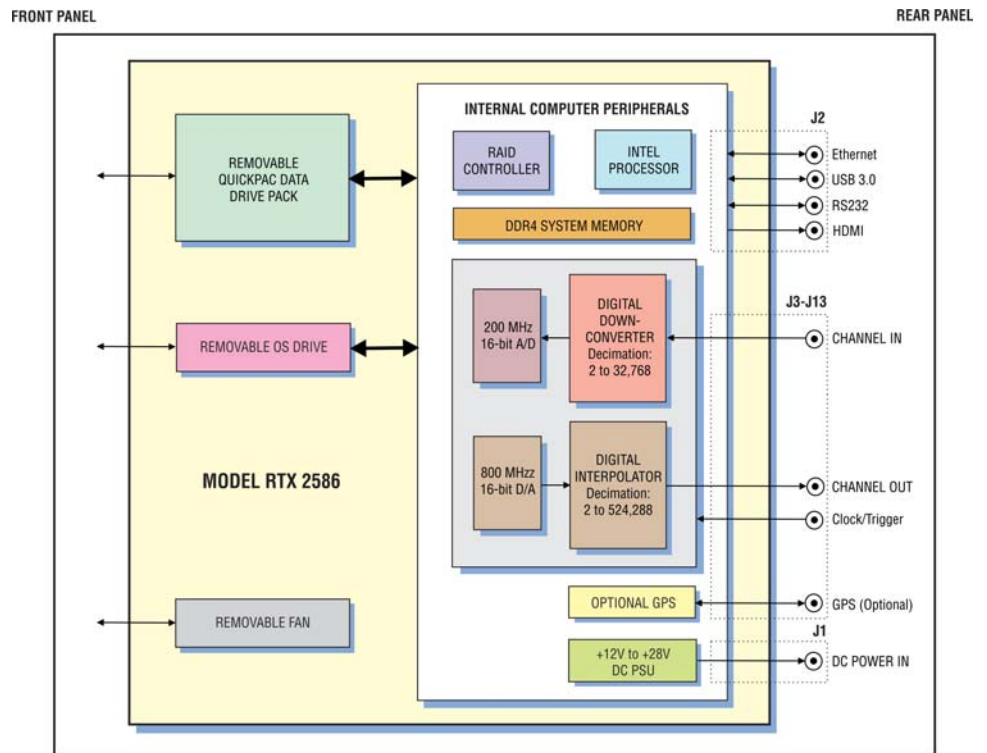
Designed to operate in the toughest environments, the recorder chassis keeps all electronics sealed from the outside environment and removes heat by conducting to forced-air cooling channels. Designed to operate from -40° to +60° C, these recorders can operate in most thermal environments, making them ideal for UAVs, aircraft pods, tight equipment bays, military vehicles and most outdoor environments.

The sealed ½ ATR chassis uses MIL-STD circular connectors for I/O to control RF emissions while protecting the recorder’s electronics from humidity, water, dust, sand and salt fog. In addition to meeting MIL-STD 461 specifications for radiated RF emissions, conducted emission military specifications are met by design with a built-in conducted emissions filter.

Designed to handle high levels of shock and vibration, this extremely rugged chassis supports Pentek’s extensive line of I/O front-ends, providing multichannel, wide bandwidth RF recording and a variety of digital interface recording options. An optional GPS receiver provides precise time stamping of recordings and can track and record the GPS position of the system during operation. ▶

Features

- Rugged 1/2 ATR MIL-spec chassis
- Designed for harsh mechanical and thermal environments
- Environmentally sealed
- Internally conduction-cooled
- Fully sealed for RF emissions with EMI power line filter
- MIL-STD circular connectors
- Compact and lightweight design - 22 lb (10 kg)
- Ideal for UAVs, military vehicles, aircraft pods and outdoor environments
- RF/IF recording with phase coherent 200 MHz 16-bit A/Ds and DDCs
- Sustained real-time record rates up to 4 GB/s
- 12 to 28 VDC power supply
- Optional GPS receiver for precise time and position stamping
- SystemFlow API, GUI and Signal Viewer analysis tools



Using QuickPacs

The Pentek QuickPacs add a valuable convenience to the RTX 1/2 ATR recorder by providing the ability to quickly remove all data storage from the recorder via the front panel.

With up to 30 TB of solid state data storage capacity, QuickPacs can be easily removed from the recorder by loosening a set of captive thumb screws.

A separate Operating System drive can be removed as well, allowing the users to extract all non-volatile memory from the system in just a few seconds.

QuickPacs include a high insertion cycle connector to provide an extremely durable data storage drive for Talon Recorders.

Spare QuickPacs can replace full ones in seconds to minimize mission downtime. QuickPacs filled with mission data can be taken to the lab where data can be retrieved, post-processed and archived with a Talon offload system.



A QuickPac removed from the Talon Recorder



A QuickPac in the process of being removed from the front of a Talon Recorder



A fan removed from the Talon Recorder

Sealed Chassis with Cooling Design

The Talon RTX SFF chassis seals the internal electronics from the outside environment by providing an inner plenum that is designed to extract heat from the internal electronics via conduction.

The plenum is supplemented by a removable fan that is used to pull air from the front of the chassis and exhaust it through the rear. Only the fan is exposed to the outside environment, assuring the electronics are protected in the sealed chassis.

The removable fan pulls air from the front of the chassis across heat sinks that are welded to the inner plenum of the chassis.

The welded heat sinks are attached directly to all heat generating electronics within the sealed chassis providing a conduction-cooled path to the inner plenum. This assures optimal cooling while maintaining a sealed design. The inner plenum can be replaced to provide other cooling options, such as liquid or conduction-cooling.



A fan in the process of being removed from the back of a Talon Recorder

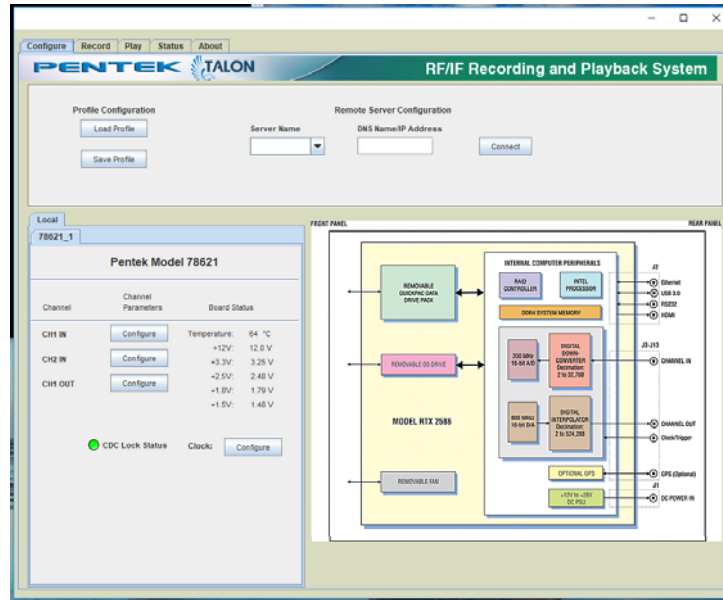


Rear Panel I/O

Rear Panel I/O

The Talon RTX SFF rear panel I/O provides MIL-STD circular connectors for power and computer I/O. Bulkhead mounted SMA connectors for RF signals, GPS, clocks and triggers are sealed with gaskets for moisture and RF emissions protection. Optical I/O is provided via an optional rear panel. ▶

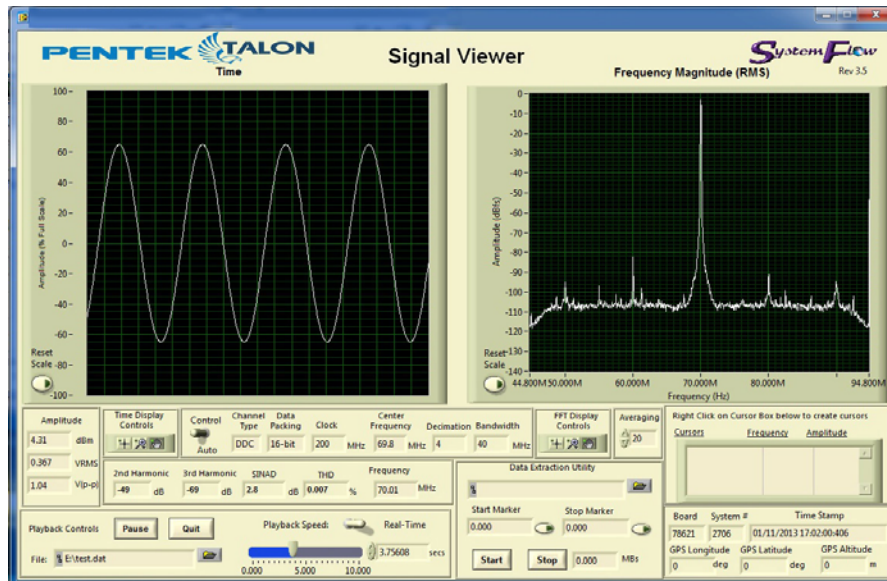
SystemFlow Graphical User Software



SystemFlow Main GUI

All Talon RTX SFF Recorders include the Pentek SystemFlow® recording software. SystemFlow features a Windows-based GUI (Graphical User Interface) that provides a simple means to configure and control the recorder.

SystemFlow includes signal viewing and analysis tools, that allow the user to monitor input signals prior to, during, and after a recording session. These tools include a virtual oscilloscope, a spectrum analyzer and spectrogram displays.



Signal Viewer

SystemFlow uses a client/server architecture to allow the real-time recording software to run on the Talon recorder independent of the control software that can run on an external computer.

System engineers can use the SystemFlow GUI to control the system remotely or develop a custom interface using the SystemFlow API (Application Programming Interface). Remote control takes place over gigabit Ethernet.

Recordings are kept simple to allow for extremely high bandwidth data storage, streaming only the raw data to disk. A simple header that holds the recording parameters is added to the beginning of the file.

An optional GPS receiver allows the user to precisely timestamp files and optionally track the recorder's position throughout a mission. The system records all data to the native NTFS file system, allowing for quick and easy access to the data from any computer. ➤

Specifications

Physical Characteristics

Dimensions: 7.688" H x 4.880" W x 14.125" D
(195 mm H x 124 mm W x 359 mm D)

Weight: 22 lb (10 kg)

Storage: One removable Quickpak
with up to 30.72 TB total storage

RAID Levels: 0, 5 and 6 available
One removable Operating System SSD
(M.2 form factor - 250 GB standard)

Front Panel I/O

- One removable QuickPac (Thumbscrew removable)
- One removable Operating System SSD (Thumbscrew removable)
- One removable System Fan (Thumbscrew removable)

Rear Panel I/O

- Chassis power connector:** Amphenol 2M805-002-16M12-2PA
- Mating cable power connector:** Amphenol 2M805-002-16M12-2PA
- Computer I/O**
- Chassis Computer I/O Connector:** Amphenol 2M805-005-07M19-85SA
- Signals, 1 each:** HDMI, USB 3.0, Ethernet(RJ 45), RS232
- Mating cable computer I/O Connector:** Amphenol 2M805-002-16M19-85PA
- RF:** 11x SMA (female SMA bulkhead-mounted with gaskets)

Cooling

- Conduction-cooled to inner air channel
- Removable fan inserted in air channel to push air across sealed heat sinks
- Optional direct conduction cooling and other methods available

Power

- +12 to +28 VDC (+24 VDC nominal) 100 Watts power consumption typical, 130 W maximum

Analog Signal Inputs

- Connectors:** Female bulkhead SMA connectors
- Input Type:** Transformer Coupled (DC-coupled option available)
- Transformer Type:** Coil Craft WBC4-6TLB
- Type:** Texas Instruments ADS5485
- Sampling Rate (fs):** 10 MHz to 200 MHz
- Resolution:** 16 bits
- SNR:** 75 dBFS Typ. @ 70 MHz
- SFDR:** 87 dBc Typ. @ 70 MHz
- Full Scale Input:** +8 dBm into 50 ohms
- 3 dB Passband:** 300 kHz to 700 MHz

Analog Signal Inputs (Continued)

Anti-Aliasing Filters:

External, user-supplied

Digital Downconverters

- Decimation:** 2 to 32,768
- IF Center Frequency Tuning:** DC to f_s , 32 bits
- LO SFDR:** >120 db
- DDC Usable Bandwidth:** $0.8 * f_s / D$

Analog Signal Outputs

- Connectors:** Female bulkhead SMA connectors
- Input Type:** Transformer Coupled
- Transformer Type:** Coil Craft WBC4-6TLB
- Full Scale Output:** +4 dBm into 50 ohms
- 3 dB Passband:** 300 kHz to 700 MHz

D/A Converters

- Type:** TI DAC5688
- Input Data Rate to DAC5688:** 250 MS/sec max.
- Output Sampling Rate:** 800 MHz max
- Resolution:** 16 bits

Digital Upconverters

- Interpolation:** 2 to 524,288
- Output IF:** DC to 400 MHz
- Bandwidth Range:** matches recording bandwidths

Clock Sources

- Source:** selectable from onboard programmable VCXO, or external clock
- External Clock Connector:** Female bulkhead SMA connector
- External Clock Signal Requirement:** Sine wave 0 dBm to 10 dBm full scale

External Trigger

- External Trigger Connector:** Female bulkhead SMA
- External Trigger Signal Requirement:** TTL

Processor and Memory

- Processor:** Intel Core i7, 7700K, 7th Generation, Quad Core, 4.2 GHz
- DRAM:** 8 GB DDR 4, optional 16 to 32 GB

Environmental

- Operating Temp:** -40° to +60° C
- Storage Temp:** -65° to +85° C
- Altitude:** 60,000 feet
- Relative Humidity:** 5 to 95%, condensing
- Vibration:** MIL-STD-810 Method 514.5
- Shock:** MIL-STD-810 Method 516.5
- EMI/EMC:** MIL-STD-461 - CE101, CE102, CS101, RE101, RE102, RS101
- Sand and Dust:** MIL-STD-810 Method 510

Options

Storage Options

- Option -410** 3.84 TB SSD Storage
- Option -415** 7.68 TB SSD Storage
- Option -420** 15.36 TB SSD Storage
- Option -430** 30.72 TB SSD Storage

RAID Configurations

- Standard** RAID Level 0
- Option -285** RAID Level 5
- Option -286** RAID Level 6

Additional Options

- Option -261** GPS Time and Position Stamping
- Standard** 8 GB DDR System Memory
- Option -309** 16 GB DDR System Memory
- Option -310** 32 GB DDR System Memory

Specifications are subject to change without notice